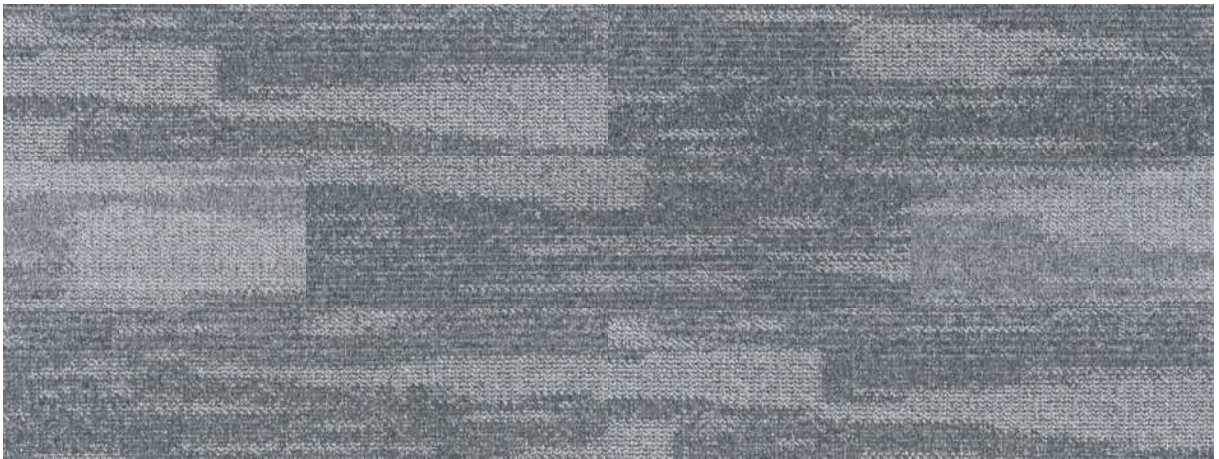


# Palette

( Plank Series )

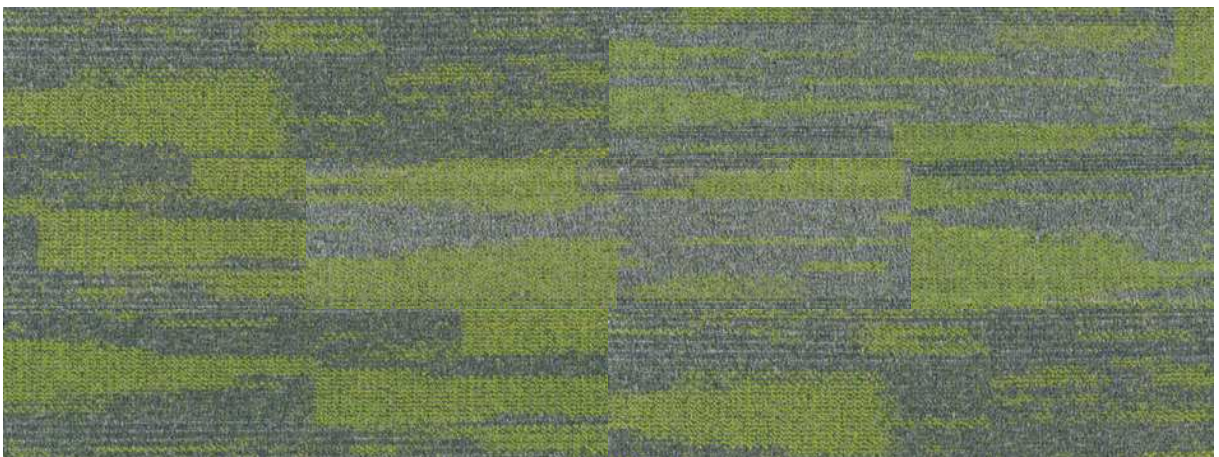




PA 3311 KELABU



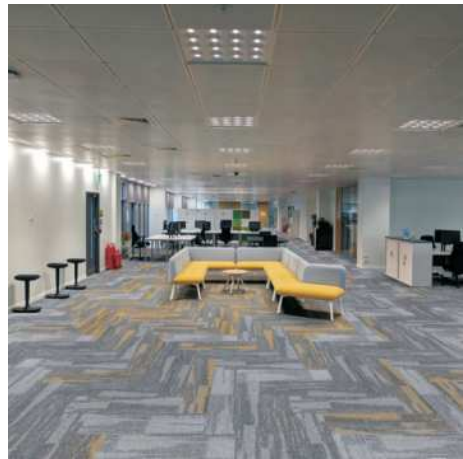
PA 3320 BIRU



PA 3336 LJO



PA 3311



PA 3311 & PA 3362



PA 3311 & PA 3320



PA 3311 & PA 3386



PA 3311 & PA 3336



PA 3311 & PA 3358



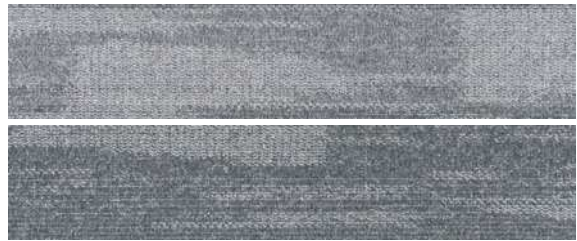
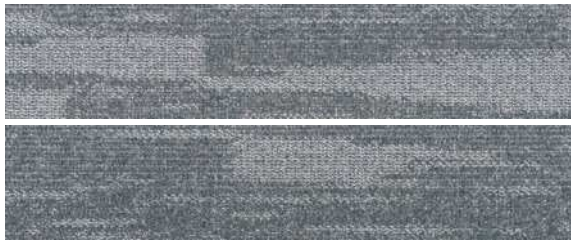
PA 3362 KUNING



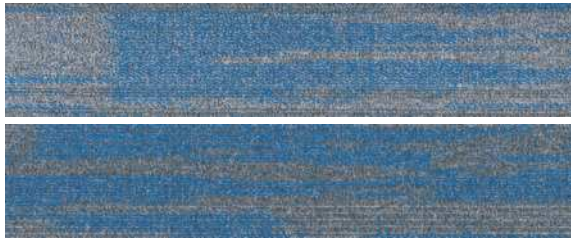
PA 3386 ORANYE



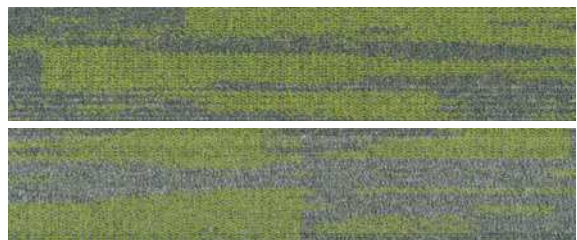
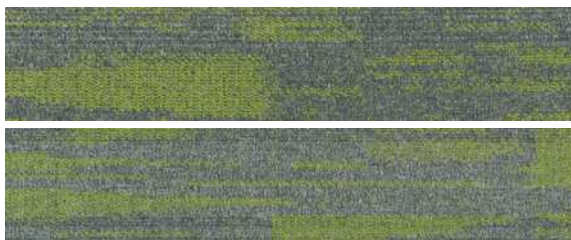
PA 3358 ABANG



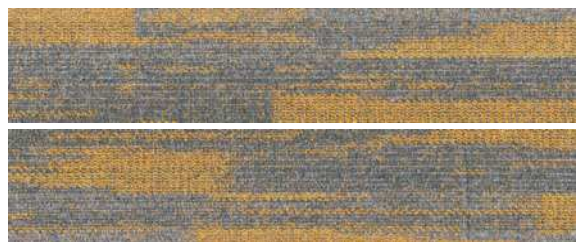
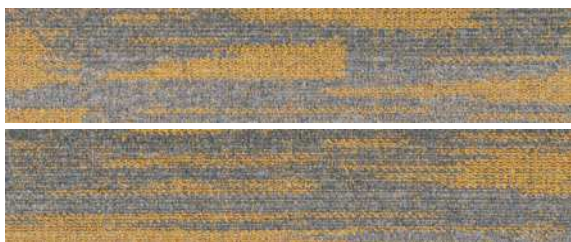
PA 3311



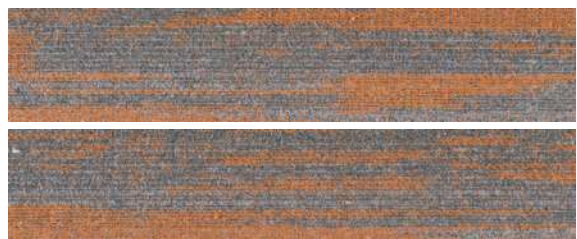
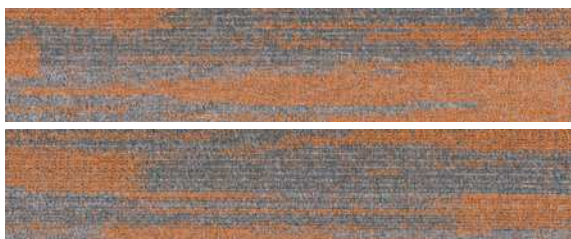
PA 3320



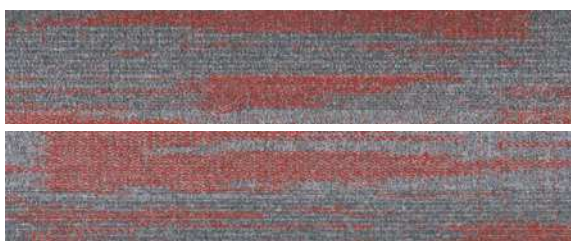
PA 3336



PA 3362



PA 3386



PA 3358

## Technical Specification :

Product Identification :.....	<b>PALETTE</b>
Constructional Process :.....	Multi-Level Loop
Manufacturing Method :.....	Tufted
Colour System :.....	Solution Dyed Yarn
Yarn Weight :.....	1 6 oz/sq.yd ( 550 gsm )
Pile Height :.....	3.5-4.5 mm
Yarn Content :.....	100% Polypropylene
Total Height :.....	6.0 mm
Gauge :.....	1/12"
Primary Backing :.....	Non - Woven Synthetic
Tile Backing :.....	Bitumen+ 110g Non - Woven Fabric
Tile Size :.....	250 x 1000 mm
Packing :.....	24 Pieces Per Carton ( 6 m <sup>2</sup> )

## Performance Characteristics :

- Solution dyed fibres enable colour retention throughout the useful life of the carpet.
- Polypropylene fibres possess good colourfastness properties.
- The polypropylene yarn are antistatic and can therefore be aptly deployed in work environment where antistatic properties are required.
- The polypropylene fibres are antimicrobial and antibacterial which inhibit the growth of microorganisms such as bacteria and fungi.
- The inherent polypropylene resistance to moisture absorption permits spills and stains to be quickly removed.

Warranty :..... 1 Year Limited Warranty  
Usage :..... Commercial Applications

Note : Colour from another production lot is subject to dye lot variation.

## Recommended Installation:

